

**ENO2 Antibody**  
**Purified Mouse Monoclonal Antibody**  
**Catalog # AO1744a****Specification****ENO2 Antibody - Product Information**

Application	WB, IHC, FC, E
Primary Accession	<a href="#">P09104</a>
Reactivity	Human, Mouse
Host	Mouse
Clonality	Monoclonal
Isotype	IgG1
Calculated MW	47.3kDa KDa

**Description**

This gene encodes one of the three enolase isoenzymes found in mammals. This isoenzyme, a homodimer, is found in mature neurons and cells of neuronal origin. A switch from alpha enolase to gamma enolase occurs in neural tissue during development in rats and primates.

**Immunogen**

Purified recombinant fragment of human ENO2 (AA: 251-433) expressed in E. Coli.

**Formulation**

Purified antibody in PBS with 0.05% sodium azide

**ENO2 Antibody - Additional Information**

**Gene ID** 2026

**Other Names**

Gamma-enolase, 4.2.1.11, 2-phospho-D-glycerate hydro-lyase, Enolase 2, Neural enolase, Neuron-specific enolase, NSE, ENO2

**Dilution**

WB~~1/500 - 1/2000  
IHC~~1/200 - 1/1000  
FC~~1/200 - 1/400  
E~~1/10000

**Storage**

Maintain refrigerated at 2-8°C for up to 6 months. For long term storage store at -20°C in small aliquots to prevent freeze-thaw cycles.

**Precautions**

ENO2 Antibody is for research use only and not for use in diagnostic or therapeutic procedures.

**ENO2 Antibody - Protein Information**

**Name** ENO2 ([HGNC:3353](#))

**Function**

Enolase that catalyzes the conversion of 2-phosphoglycerate to phosphoenolpyruvate in glycolysis and the reverse reaction in gluconeogenesis (By similarity). Has neurotrophic and neuroprotective properties on a broad spectrum of central nervous system (CNS) neurons. Binds, in a calcium-dependent manner, to cultured neocortical neurons and promotes cell survival (By similarity).

**Cellular Location**

Cytoplasm. Cell membrane. Note=Can translocate to the plasma membrane in either the homodimeric (alpha/alpha) or heterodimeric (alpha/gamma) form

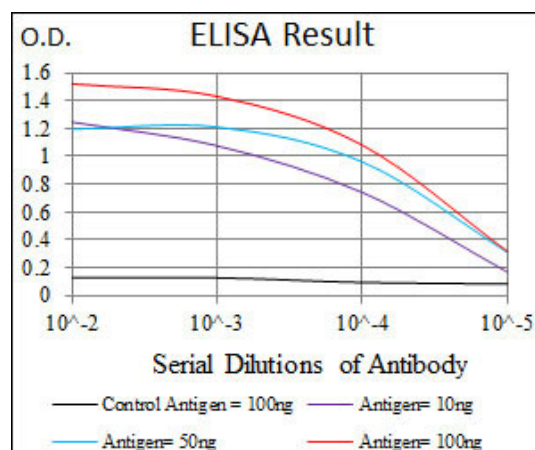
**Tissue Location**

The alpha/alpha homodimer is expressed in embryo and in most adult tissues. The alpha/beta heterodimer and the beta/beta homodimer are found in striated muscle, and the alpha/gamma heterodimer and the gamma/gamma homodimer in neurons

**ENO2 Antibody - Protocols**

Provided below are standard protocols that you may find useful for product applications.

- [Western Blot](#)
- [Blocking Peptides](#)
- [Dot Blot](#)
- [Immunohistochemistry](#)
- [Immunofluorescence](#)
- [Immunoprecipitation](#)
- [Flow Cytometry](#)
- [Cell Culture](#)



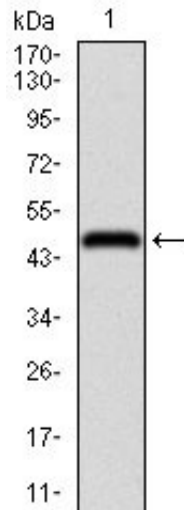


Figure 1: Western blot analysis using ENO2 mAb against human ENO2 recombinant protein. (Expected MW is 46 kDa)

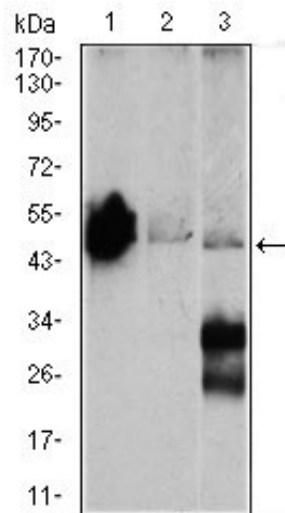


Figure 2: Western blot analysis using ENO2 mouse mAb against Mouse brain (1), NIH3T3 (2), and C6 (3) cell lysate.

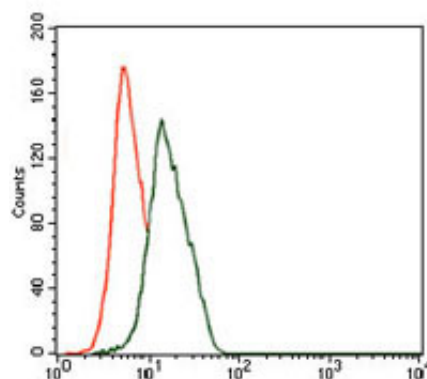


Figure 3: Flow cytometric analysis of HeLa cells using ENO2 mouse mAb (green) and negative control (red).

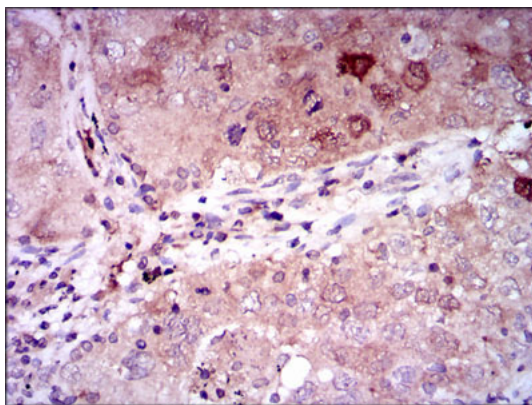


Figure 4: Immunohistochemical analysis of paraffin-embedded lung cancer tissues using ENO2 mouse mAb with DAB staining.

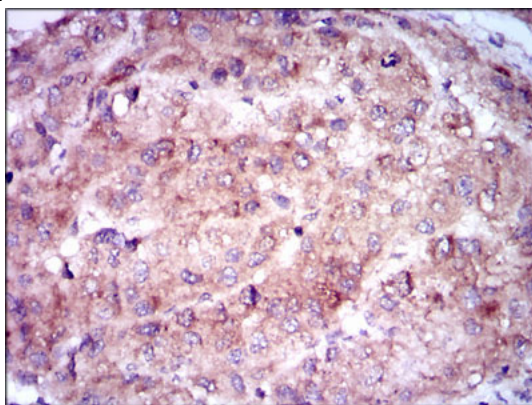


Figure 5: Immunohistochemical analysis of paraffin-embedded liver cancer tissues using ENO2 mouse mAb with DAB staining.

#### ENO2 Antibody - References

1.Neurology. 2011 Aug 16;77(7):623-30. 2.Lung Cancer. 2011 Feb;71(2):224-8.